

SLIMLINE FUSION

DIRECT VENT GAS FIREPLACE

HEAT & GLO





INNOVATIVE
VERSATILITY

SL-750F shown with Firescreen front, reflective black interior and standard logs

SLIMLINE FUSION

SlimLine direct vent gas fireplaces can be personalized with modern or traditional interiors to create a modern or traditional ambiance that is uniquely yours.

Whether you are amplifying your style today, or upgrading your space years from now, it's all possible with a SlimLine Fusion gas fireplaces.



SL-550F shown with Clean Face front, reflective black interior and black glass media

FRONT OPTIONS

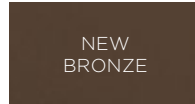
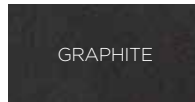
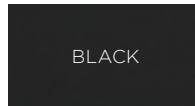


FIRESCREEN
Included standard.
Available in black only.

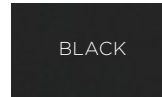


CLEAN FACE KIT
Add clean lines and sleek style.

CLEAN FACE FRONT FINISHES



TRIM KIT
Available in three or four-sided kits in black or stainless steel.



REFLECTIVE BLACK GLASS INTERIOR
Complement your flame with an optional reflective glass interior.

STANDARD LOGS OR OPTIONAL GLASS AND STONES



LOGS
(STANDARD)



CLEAR GLASS



EBONY GLASS



AMBER GLASS



COBALT GLASS



WHITE GLASS
BEADS



BLACK GLASS
BEADS



CLEAR GLASS
BEADS



CERAMIC FIBER
STONES



CONTROLS

SMARTSTAT REMOTE CONTROL

Features: on/off, timer mode, thermostat mode, room temperature readout.

FAN

Enhance heating performance and efficiency with an optional fan kit.

SLIMLINE FUSION TECHNOLOGIES



INTELLIFIRE™ IGNITION SYSTEM

The IntelliFire™ Ignition System (IPI) is an advanced intermittent pilot ignition system. IPI constantly monitors ignition, ensures safe functioning and conserves up to \$10/month in energy costs.



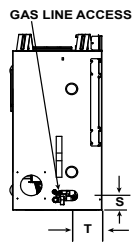
DIRECT VENT TECHNOLOGY

Direct Vent fireplaces remove 100% of combustion exhaust and odors outside of the home. These sealed fireplaces provide optimal heat, conserve energy and ensure clean, safe indoor air quality.

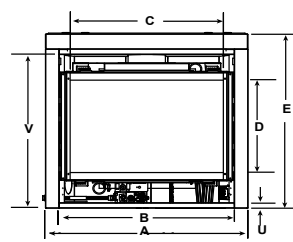
SLIMLINE FUSION SPECIFICATIONS

MODEL	FRONT WIDTH		BACK WIDTH		HEIGHT		DEPTH		GLASS SIZE	BTU/HOUR INPUT
	UNIT	FRAMING	UNIT	FRAMING	UNIT	FRAMING	UNIT	FRAMING		
SL-5F	36 [914]	37 [940]	25-3/4 [654]	37 [940]	34-3/8 [873]	34-3/4 [883]	16-5/16 [414]	16-1/4 [413]	27-3/16 x 18-1/16 [691 x 459]	12,000-17,500 (NG) 13,500-17,000 (LP)
SL-7F	41 [1041]	42 [1067]	30-3/4 [781]	42 [1067]	37-7/8 [962]	38-1/4 [972]	16-5/16 [414]	16-1/4 [413]	32-1/16 x 21-1/2 [814 x 546]	16,500-24,000 (NG) 16,500-20,500 (LP)

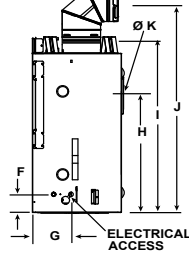
LEFT SIDE VIEW



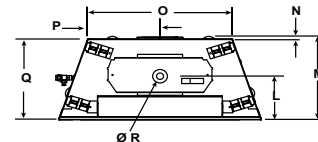
FRONT VIEW



RIGHT SIDE VIEW



TOP VIEW



MODEL	A	B	C	D	E	F	G	H	I	J	K	L	M	N	O	P	Q	R	S	T	U	V
SL-5F	36 [914]	31-1/8 [791]	27-3/16 [691]	18-1/16 [459]	34-1/16 [865]	3-9/16 [91]	6-7/8 [175]	23-3/8 [594]	34-3/8 [873]	35-1/2 [902]	8 [203]	8-13/16 [224]	16-5/16 [414]	1/2 [13]	25-3/4 [654]	12-7/8 [327]	15-7/8 [403]	6-5/8 [168]	2-3/16 [55]	6 [152]	1 [25]	30-1/16 [764]
SL-7F	41 [1041]	36-1/8 [918]	32-1/16 [814]	21-1/2 [546]	37-5/8 [955]	3-9/16 [91]	6-7/8 [175]	26-7/8 [683]	37-7/8 [962]	39-15/16 [1014]	8 [203]	8-13/16 [224]	16-5/16 [414]	1/2 [13]	30-3/4 [781]	15-3/8 391	15-7/8 [403]	6-5/8 [168]	2-3/16 [56]	6 [152]	1 [25]	33-9/16 [853]

Dimensions are in inches and millimeters. Product information is not complete and is subject to change without notice. Product installation must adhere strictly to instructions shipped with product. We recommend measuring individual units at installation. Assumes the use of 1/2" sheetrock. NOTE: Combustible material should not cover the face. Make sure you do NOT cover the decorative door opening.

Refer to installation manual for detailed specifications on installing this product. Heat & Glo® reserves the right to update units periodically. The flame and ember appearance may vary based on the type of fuel burned and the venting configuration used. Actual product appearance, including flame, may differ from product images.

For complete information on this model, please contact us at:



No one builds a better fire

Web: heatnglo.com
Phone: (888) 427-3973
E-mail: info@heatnglo.com

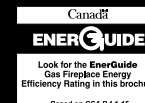
- [facebook.com/HeatandGlo](https://www.facebook.com/HeatandGlo)
- twitter.com/HeatandGlo
- [youtube.com/HeatandGlo](https://www.youtube.com/HeatandGlo)

HNG-1130U-0319

LIMITED LIFETIME WARRANTY³

The strongest in the industry, Heat & Glo provides a limited lifetime warranty on the most important aspects: firebox and heat exchanger.

³ For full warranty details see heatnglo.com. Fireplace glass and other surfaces get extremely HOT and can cause severe burns if touched. Do not remove the protective safety screen from the front of the glass. Keep a safe distance away. To learn more visit www.heatnglo.com/fireplace_safety



U.S. EFFICIENCIES

Steady State - Since most homeowners use their fireplaces for an extended time while they are in the room, Steady State measures how efficiently your fireplace converts fuel to heat once it is warmed up and running in a "steady state".

AFUE - AFUE rating is more typically used with appliances, like your furnace, that continually cycle on and off to maintain a constant temperature.

RATING	SL-5F	SL-7F
STEADY STATE	68% (NG)	74% (NG)
AFUE	48.5% (NG)	57.1% (NG)

CANADA EFFICIENCIES

EnerGuide (CSA P.4.1-15) - EnerGuide is a rating used in Canada to measure annual fireplace efficiency.

RATING	SL-5F	SL-7F
ENERGUIDE (CSA P.4.1-15)	51% (NG)	56% (NG)